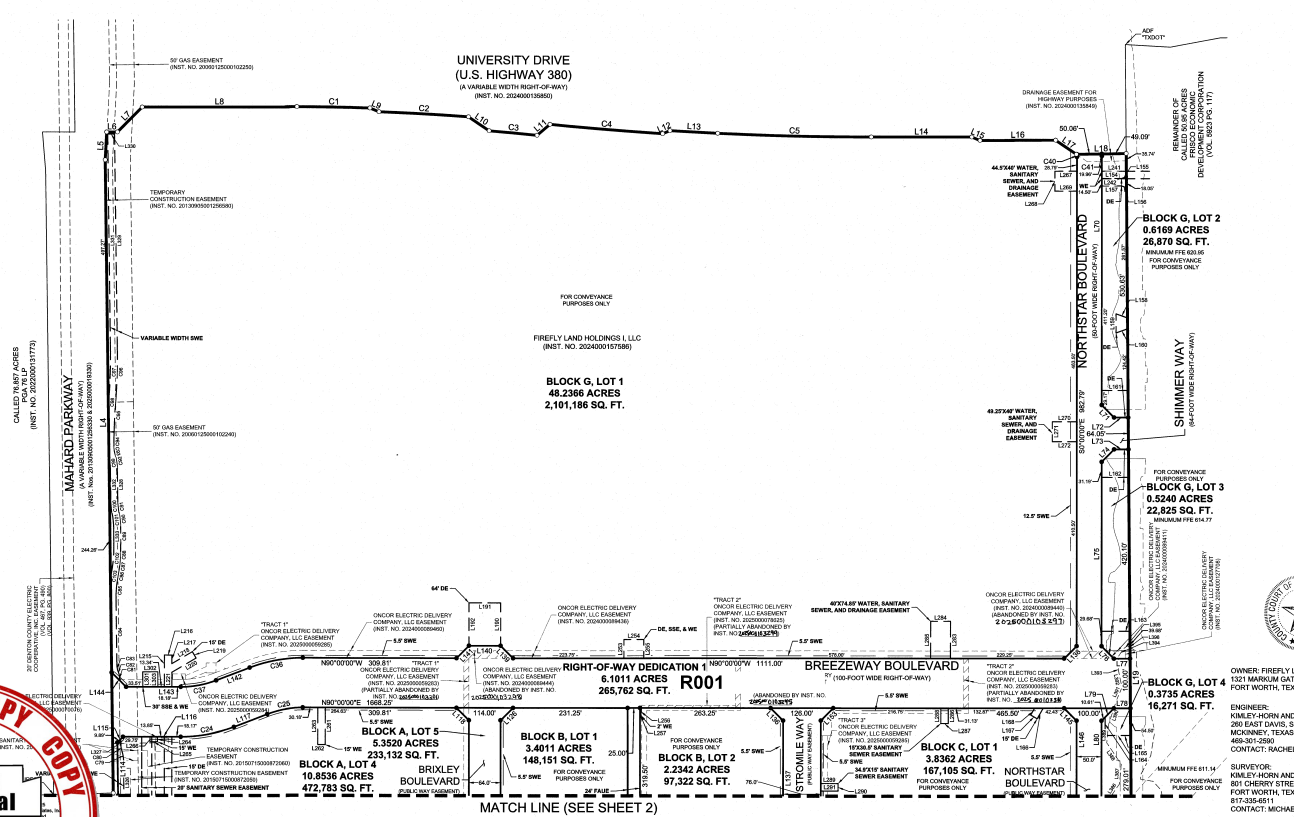
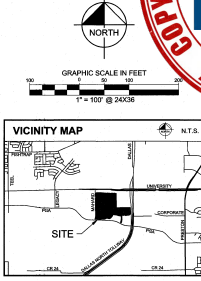


Table with columns: LINE TABLE, NO. BEARING, LENGTH, NO. BEARING, LENGTH, NO. BEARING, LENGTH, NO. BEARING, LENGTH, NO. BEARING, LENGTH, NO. BEARING, LENGTH. Contains survey data for various line segments.

Table with columns: CURVE TABLE, NO. RADIUS, DELTA, CHORD BEARING, CHORD LENGTH, NO. RADIUS, DELTA, CHORD BEARING, CHORD LENGTH, NO. RADIUS, DELTA, CHORD BEARING, CHORD LENGTH. Contains curve data for the survey.

Table with columns: LOT TABLE, LOT NO., ACRES, SQ. FT. Contains area and volume data for the lots.



FROM R-6058-000-0010-1 / 110.451 AC R-6147-006-0310-1 / ALL AC R-6148-002-0120-1 / 0.6923 AC FOR 2022

- NOTES: 1. Bearing system of this survey is based on a line oriented between City of Frisco monuments 1 and 7 found in the field... 2. The grid coordinates shown are based upon the Texas Coordinate System of 1983... 3. All corners are a 5/8-inch iron rod with "5/8" cap and unless otherwise noted...

CITY OF FRISCO PROJECT NO: CP25-0014 CONVEYANCE PLAT BLOCK G, LOTS 1-5, BLOCK B, LOTS 1-4, BLOCK C, LOT 1, BLOCK D, LOT 1, BLOCK F, LOT 1, AND BLOCK G, LOTS 1-4 FIREFLY PARK 146.6583 ACRES COLLIN COUNTY SCHOOL LAND SURVEY, ABSTRACT NO. 147 COLLIN COUNTY SCHOOL LAND SURVEY, ABSTRACT NO. 148 HENRY C. BARNES SURVEY, ABSTRACT NO. 58 CITY OF FRISCO, COLLIN COUNTY, TEXAS

S13744

OWNER: FIREFLY LAND HOLDINGS L.L.C. 1521 MARQUON GATE WAY, STE. 100 FORT WORTH, TEXAS 76126 ENGINEER: RINLEY AND ASSOCIATES, INC. 200 EAST DAVIS, SUITE 100 MCKINNEY, TEXAS 75069 CONTACT: RACHEL KORUS, P.E. SURVEYOR: RINLEY AND ASSOCIATES, INC. 801 CHERRY STREET, SUITE 1300 FORT WORTH, TEXAS 76102 CONTACT: MICHAEL BILLINGSLEY, R.P.L.S.

